

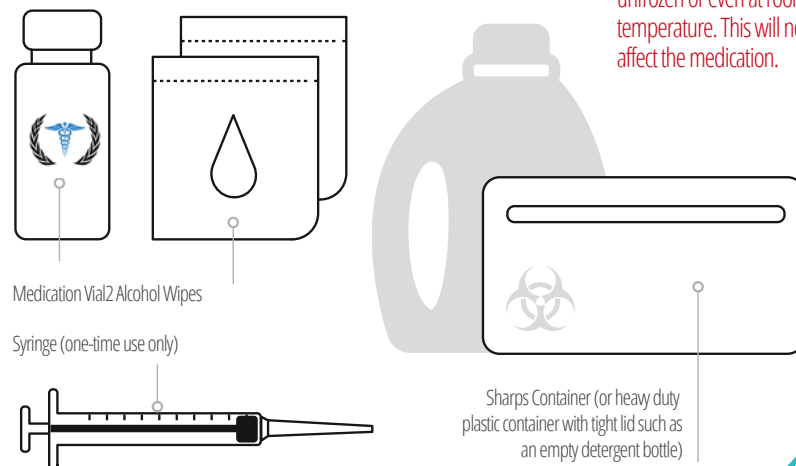
Penile Injection Guide

TRIMIX, BIMIX, QUADMIX, PGE-1

1

LET'S GET SET UP

Wash hands well with soap and water and gather your supplies on a clean surface



Penile Injections are shipped with ice packs. It is normal for the ice packs to melt in transit and for the medication to arrive unfrozen or even at room temperature. This will not affect the medication.

2

PREPARE THE INJECTION

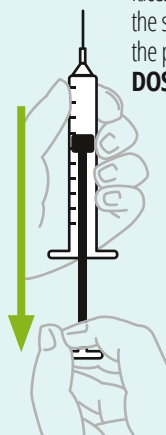
A Prepare the medication vial:

If using the medication for the first time, remove the plastic cap and discard. Using one alcohol pad, wipe the top of the vial – do this each time you use your medication.



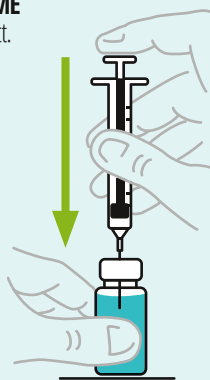
B Draw air into syringe:

Take the syringe out of the package and remove the protective cap from the needle. Hold the syringe upright, so that the needle faces the sky. Draw air into the syringe by pulling **DOWN** the plunger to the **SAME DOSE** that you will inject.



C Inject air into medication vial:

Turn the syringe downward so the needle is facing the floor. Insert the needle through the circle in the center of the rubber stopper. Push plunger **DOWN** to inject the air into the vial.



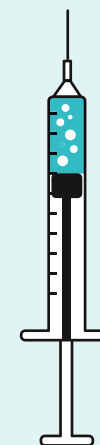
D Draw medication into syringe:

Holding the syringe with one hand and the vial with the other hand, turn the vial and syringe upside down. Do not let go of the vial or the needle may bend. Making sure that the tip of the needle is in the medication, pull **DOWN** the plunger **PAST your prescribed dose**, then slowly push the plunger **BACK UP to your prescribed dose**. This helps remove air bubbles.



E Check for air bubbles and recap syringe:

Look for air bubbles, slowly draw more medication into the syringe, then slowly push the air bubbles and the extra medication back into the vial until you are at the correct dose. Pull the needle out of the vial and carefully place the protective cap back over the needle.



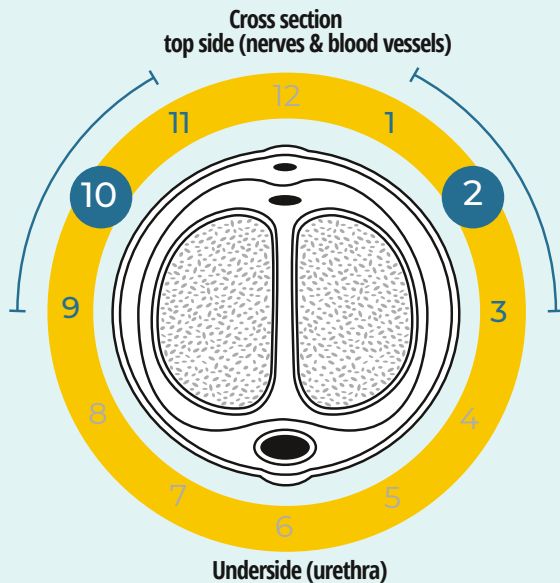
See reverse side for step 3



3 PREPARE THE INJECTION SITE

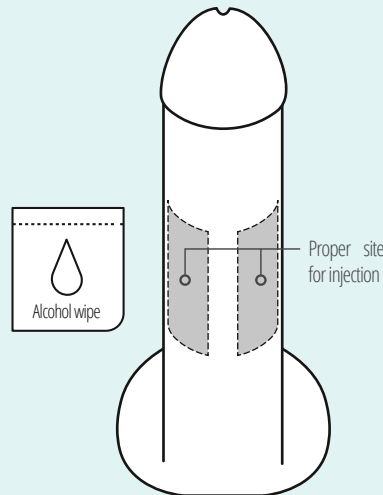
A

The for injection is between the base and the mid-portion of the penis at the **9-11 o'clock (left side) and 1-3 o'clock (side)**. Do not inject the top side or the underside of the penis at the 12 o'clock and 6 o'clock positions, and avoid visible arteries or veins on the surface.



B

Clean injection site: Grasp and pull the head of the penis toward the side of your leg. While maintaining light tension, select the site for injection and clean with an alcohol pad.



4 INJECT THE MEDICATION

A

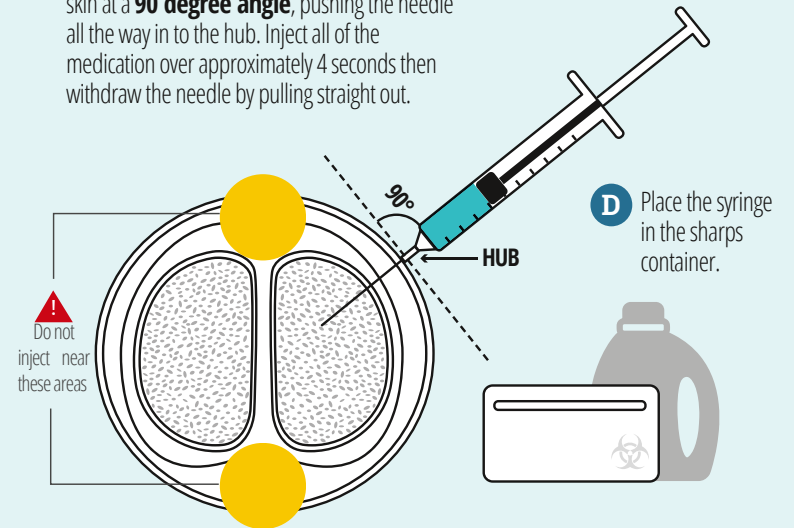
Pick up the syringe with 2 hands and remove the protective cap covering the needle.

C

To decrease bruising or bleeding, apply pressure at the injection site for 1-2 minutes (3-5 minutes if you take aspirin) with your thumb on the injection site and your index finger on the opposite side of your penis.

B

Once again, grasp the head of your penis and pull it straight out **without twisting**. With a steady and continuous motion, penetrate the skin at a **90 degree angle**, pushing the needle all the way in to the hub. Inject all of the medication over approximately 4 seconds then withdraw the needle by pulling straight out.



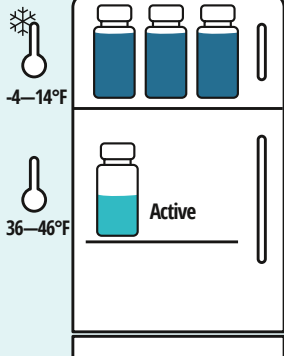
D

Place the syringe in the sharps container.

THINGS TO REMEMBER

- Always alternate sides of your penis each time you inject the medication.
- Never inject into the top or bottom of the penis.
- Wait 24-48 hours between injections, and limit use to three times weekly.
- Use the smallest dose that is effective. Too much may result in unwanted side effects.
- An erection that lasts 4 hours or more is a medical emergency and you must seek emergency medical care.

5 HOW TO STORE



1. Immediately store all vials in the freezer to maximize shelf life.
2. When you are ready to use your medication, remove one vial from the freezer and place it in the refrigerator. This is the vial that you are actively using. The active vial can be kept in the refrigerator until it is finished.
3. When the active vial is low on medication, transfer one vial from the freezer to the refrigerator. Repeat this step each time your active vial is low on medication, until it is time for a refill.



AGE WELL DR